



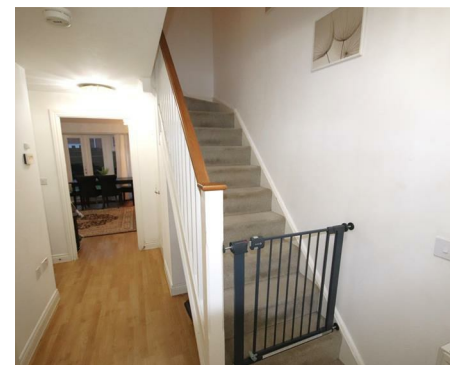
LIVERMORES
THE ESTATE AGENTS

4 Bedrooms

House - Semi-Detached

Located in Dartford

£450,000



dartford@livermores.co.uk

www.livermores.co.uk

01322 228090



GUIDE PRICE £450,000 - £475,000... Livermores are proud to present to the market this FOUR BEDROOM, semi-detached house. We highly recommend an inspection to appreciate this spacious and well planned property situated within The Bridge development with close transport links to the town centre and M25.

The accommodation comprises entrance hall, lounge, fitted kitchen with a full range of integrated appliances, master bedroom with en-suite shower room, three further bedrooms, downstairs W.C., and family bathroom. Features to note include, off road parking to front, double glazing, gas central heating and free Fast Track bus service to Dartford Town Centre and Bluewater.

This property would be ideally suited to a growing family with small to teenage children and should be viewed to be fully appreciated. **HIGHLY RECOMMENDED.**

Energy Efficiency Rating: B

Agents Note: Whilst every care has been taken to prepare these particulars, they are for guidance purposes only. All measurements are approximate and are for general guidance purposes only and whilst every care has been taken to ensure their accuracy, they should not be relied upon and potential buyers/tenants are advised to recheck the measurements.

LIVERMORES
THE ESTATE AGENTS

1 Hythe Street
Dartford
Kent
DA1 1BE

01322 228090

dartford@livermores.co.uk

www.livermores.co.uk